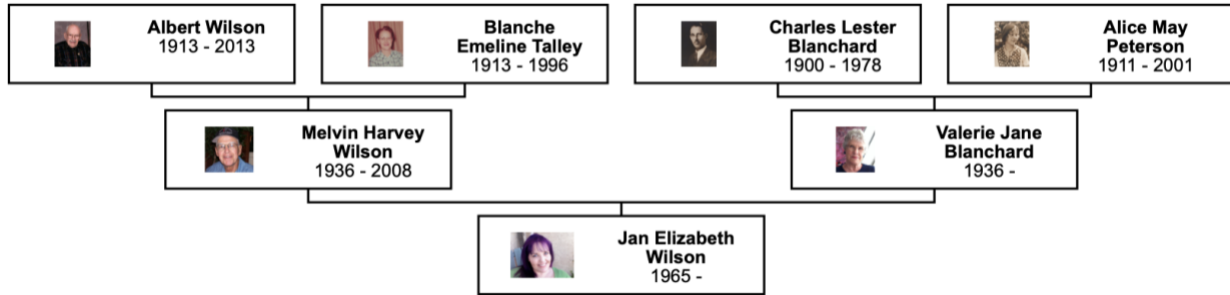


Pedigree Family Chart Information

We're used to seeing family tree charts that look like this:



But once you go back many generations the charts become enormous. For example, my grandfather Albert Wilson's chart would take up the side of a ten story building. So I've turned the family tree charts into pages that can be printed out and taped together as a chart, but I limited it to 20 generations, otherwise they are just too huge.

If you want to print the pages out and make a chart you can figure out how to tape the pages together if you keep the pages in the order in which they printed and look at the borders.

Some of the trees are smaller, so those won't be a problem to figure out.

Jan Wilson

Janwilson515@gmail.com

October 24, 2020

Vertical Pedigree Chart for Alice May Peterson

11th Great-Grandparents

10th Great-Grandparents

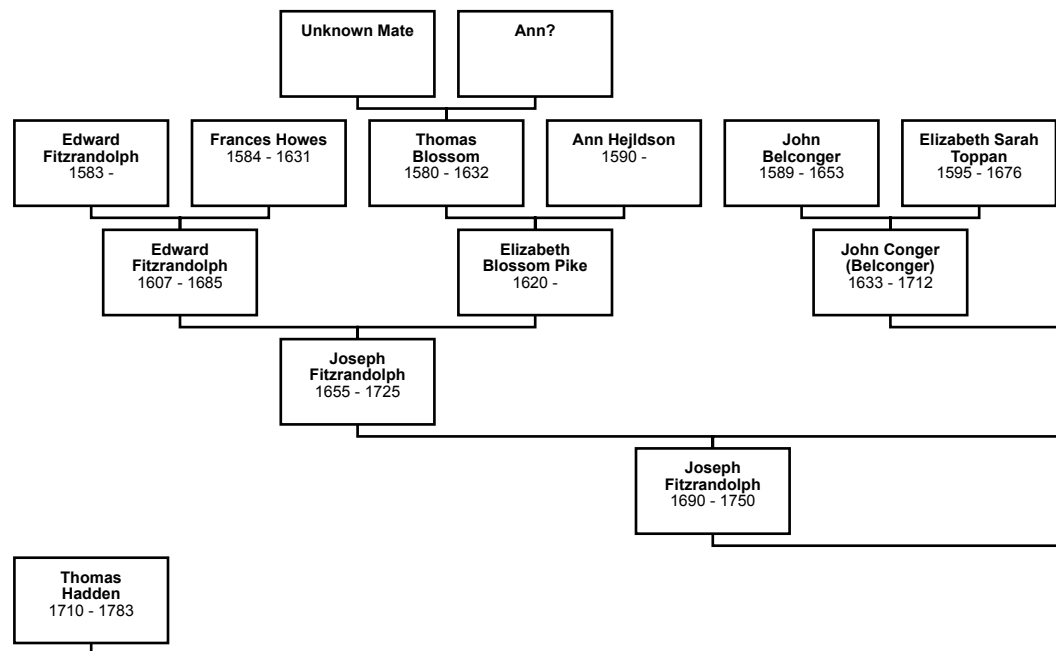
9th Great-Grandparents

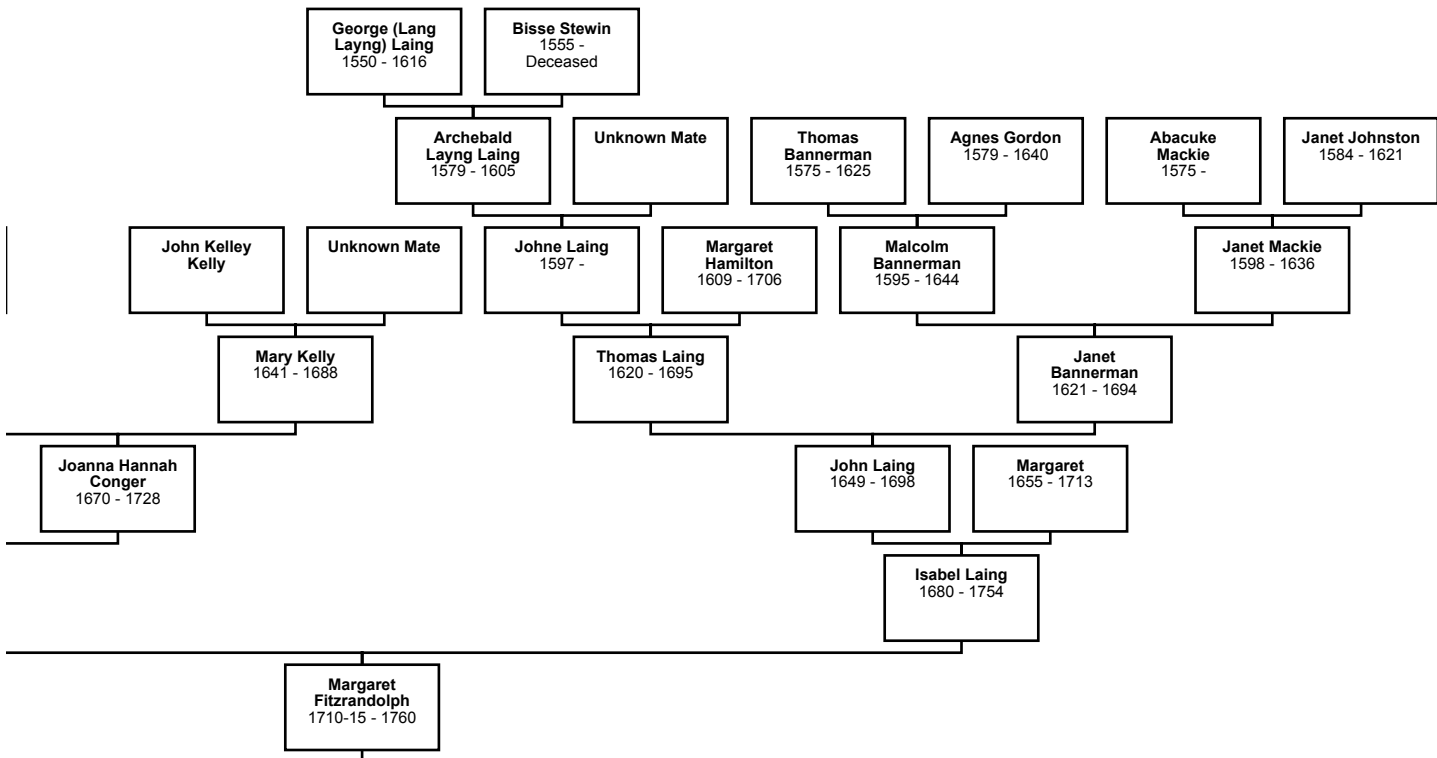
8th Great-Grandparents

7th Great-Grandparents

6th Great-Grandparents

5th Great-Grandparents





4th Great-Grandparents

3rd Great-Grandparents

2nd Great-Grandparents

Great-Grandparents

Grandparents

Parents

Joseph Hedden
1742 - 1833

Martha Oliver
1750 - 1842

Thomas Hedden
1776 - 1860

Sarah Byram
1777 - 1856

Oliver Hedden
1805 - 1851

Anders Olsson
1753 - June
5, 1817 (63)

Maria Olsdotter

Anders Nilsson
1796 - 1860

Kerstin Andersdotter
1791 - 1874

Nils Danielsson
1797 -

Margareta Jonsdotter
1807 -

Henry O. Hedden
1839 -

Petter Andersson
1835 - 1917

Maria Kajsa Nilsson
1839 - 1926

Frank Peterson
1874 - 1916

Alice May Peterson
1911 - 2001

Charles Lester Blanchard
1900 - 1978

